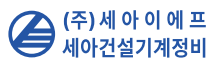


CONSTRUCTION MACHINERY Re-Man



CHUNJI-KOREA



Korea Remanufacturing Association
of Construction & Industrial Machinery

Korea Construction Mechanical Re-Man Complex



Location and Area

- Gyeongsan, Gyeongsangbuk-do
- Sales area : 112,221m²

Major reman products



- Finished car : Excavators, wheel loaders, bulldozers, Forklifts, specially equipped vehicles, etc.
- Parts: Engine, hydraulic parts for construction equipment, Attachments, etc.

Main Facilities



<Painting facility>



<Test facility>



<DPF Cleaning>

Mobile Durometer



Self-destructive non-destructive testing equipment



Rotational Speed Meter (RPM)



Mobile flow meter



<Quality inspection (test) equipment>

THE NEW HYUNDAI SYMBOL

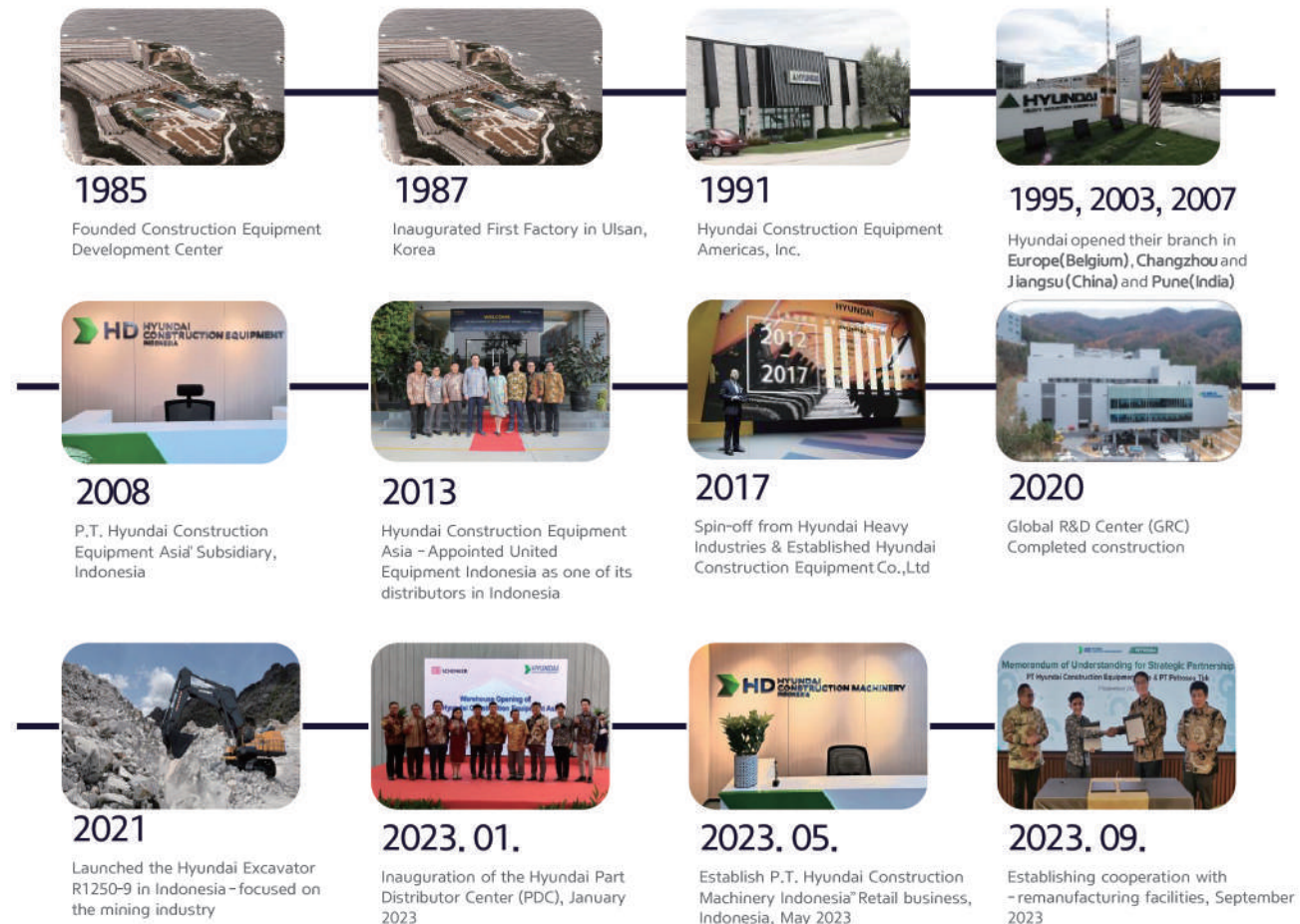
THE SPIRIT OF HYUNDAI

We are a team of fearless innovators, warm-hearted leaders, and reliable experts who strive to empower industries and humanity with the essential technologies for building a sustainable future.

The refreshed HD brand identity embodies the spirit of Hyundai. As best represented by a quote from our late founder Chung Ju-yung, "If there is no way, find a way, and if there is still no way, we just have to pave a new way."



HD HYUNDAI CONSTRUCTION EQUIPMENT MILESTONE



New Brand Identity : building a comfortable tomorrow

- HCE's announced its New Brand Identity 'Comfort Intelligence' & Brand Slogan "Building a Comfortable Tomorrow"
- The new Brand Identity encompasses HD Hyundai Construction Equipment's values and ways of thinking for a better future.
- The new Slogan Building a Comfortable Tomorrow illustrates our vision which is to provide mankind a comfortable Tomorrow based on our high end technology

Comfort Intelligence™

building a
comfortable
tomorrow

scan here to
watch the New
Brand Story of
HD HCE :



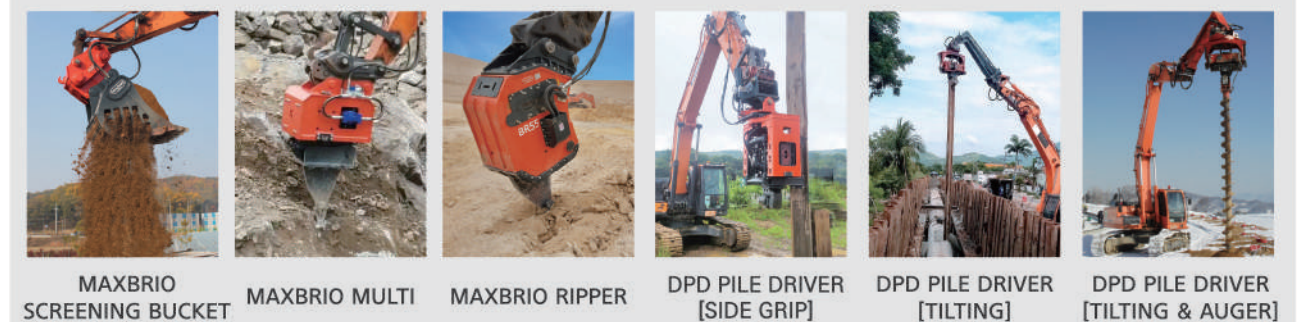


maxbrio®
SINCE 1997



www.dd-eng.com

www.maxbrio.kr



MOBILE JAW CRUSHER SJ-300



Specifications

MODEL	SC-300	MODEL	SJ-300
Max. feed size	210mm	Max. feed size	1,100mmX750mm
Capacity	Up to 360ton/hr	Capacity	Up to 360ton/hr
Engine	DC13 385HP	Engine	DC09 315HP
Total weight	45,000kg	Total weight	50,000kg
Transport dimensions	Length 16.99m / Width 2.99m / Height 3.46m	Transport dimensions	Length 15.87m / Width 2.99m / Height 3.49m



MOBILE CONE CRUSHER SC-300

JAW CRUSHER



CONE CRUSHER



V.S.IMPACT CRUSHER





Excavator · part

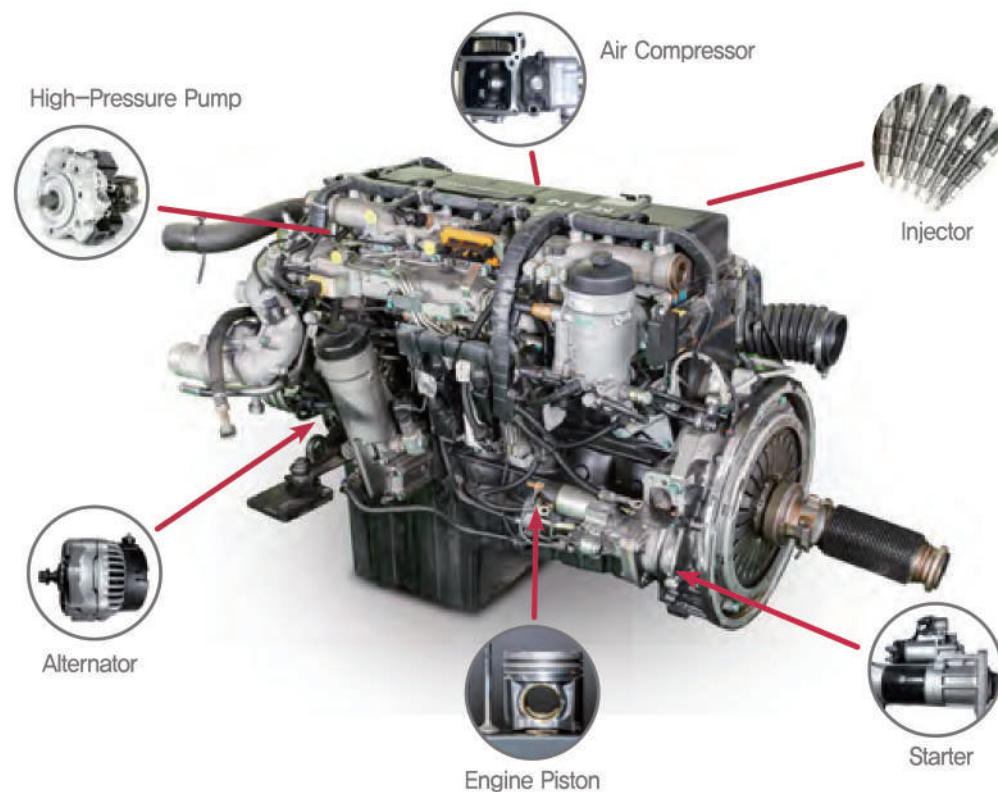


Electric excavator 4 type



Remanufacturing Parts | Gimpo Service 2023

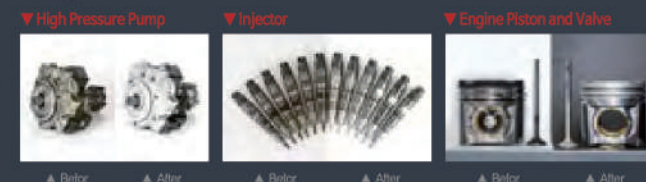
Gimpo Service Co., Ltd. REMANUFACTURING ENGINE



Cab



Engine Parts



Gimpo Service co, Ltd
Tel. +82-32-569-8994
www.man-gs.com



Gimpo Service Co., Ltd., a leading remanufactured company, produces high quality remanufactured parts, such as diesel engines, commercial vehicle generators, required for professional technical standard of imported vehicles with fully equipped large-scale remanufactured production system.

Gimpo Service Co., Ltd., Remanufactured parts

- ▶ Built up remanufactured production lines of diesel engine of commercial vehicle with cutting edge facilities; produce high quality products, supply parts to service outlets of manufacturer and the 1st class service centers as well as retail sales
- ▶ With remanufactured specialized production facilities produce remanufactured parts such as generator, air compressor, steering gear, start motor and high-pressure pump for commercial vehicle and make sales with more than 100 units per year
- ▶ Obtained ISO 9001:2015, Quality Management System by minimizing generation of pollutants and establishing remanufactured production facilities with high standard technical know-how and highly efficient production process
- ▶ Based on high standard technology, operate a high-efficiency and outstanding remanufactured production system by maximizing use of the core as a raw material
- ▶ Hold a number of patents related with the remanufacturing production equipment

▼ Production line system of remanufactured products, Gimpo Service Co., Ltd.



▲ Remanufactured product of Diesel Engine(MAN COMMON RAIL)



▲ Cab remanufactured product of MAN Tractor



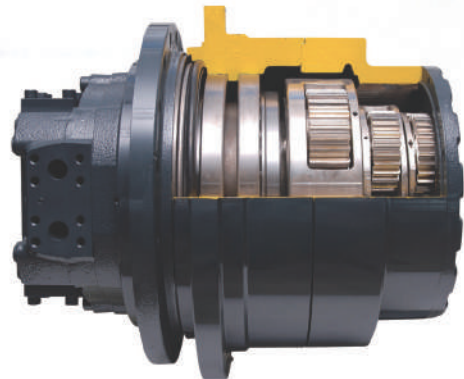
▼ Visit our web page for more information of Gimpo Service Co., Ltd.

www.man-gs.com

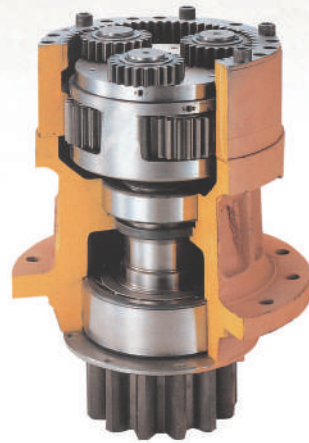
REDUCTION GEAR ASSEMBLY

Zero-defect precision

High performance equipment with the most advanced components on the market.
The best service for direct replacement parts.



• Traveling Reduction Gear Assembly



• Swing Reduction Gear Assembly



• Carrier Assembly



• Ring Gear / Drive Shaft / Pinion Gear



• Assembly Line



• Shaper



• High-Frequency Heat Treatment

HYDRAULIC MOTOR

Creation of value for the customer

Years of research and testing have produced one of the most productive, cost effective and zero defect systems available.

Making the Future

Representing a history of challenge and creation for the development of Reduction Gears, Hydraulic Motors and Axles.



• Traveling Hydraulic Motor



• Swing Hydraulic Motor



• Deburring and Test Line

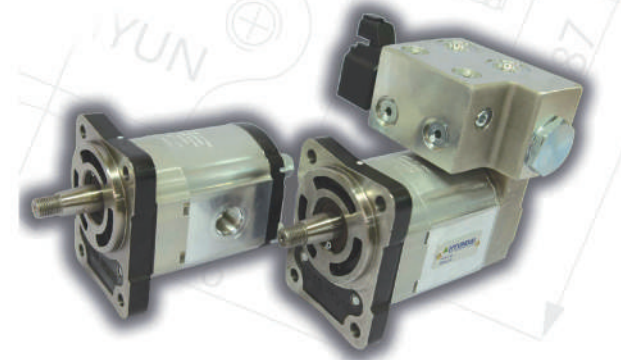
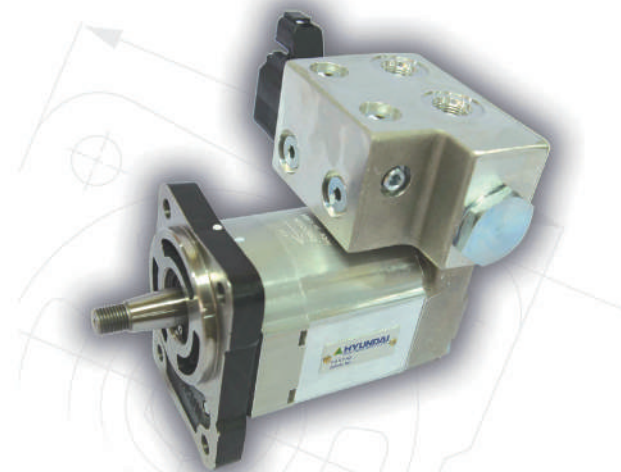
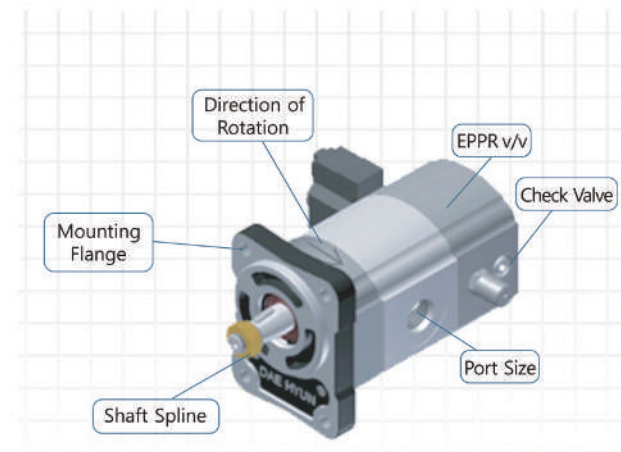


• Honing Machine

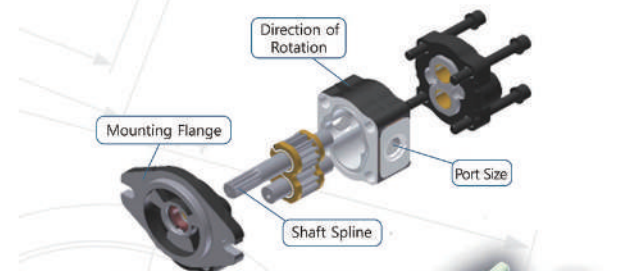
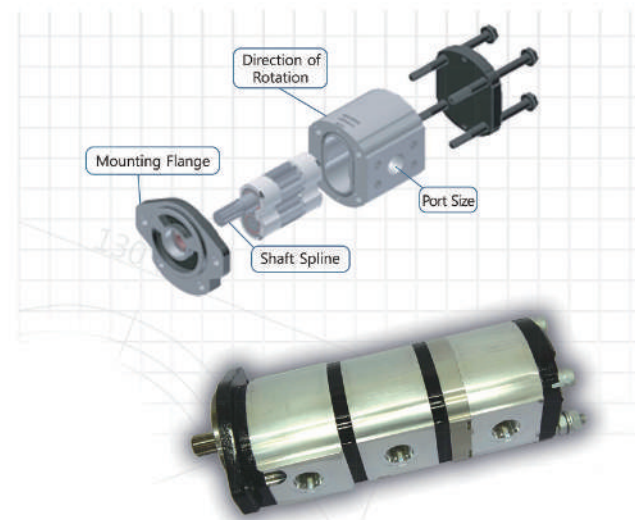


• Coordinate Measurement Machine

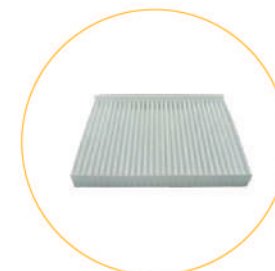
Gear Motor



Gear Pumps



Heavy Equipment



Aicon-Filter



Air Filter



Hydraulic Oil Filter



T/M Oil Filter



Fuel Filter



Oil Filter

Forklift Type



Hydraulic Oil Filter



Air Filter



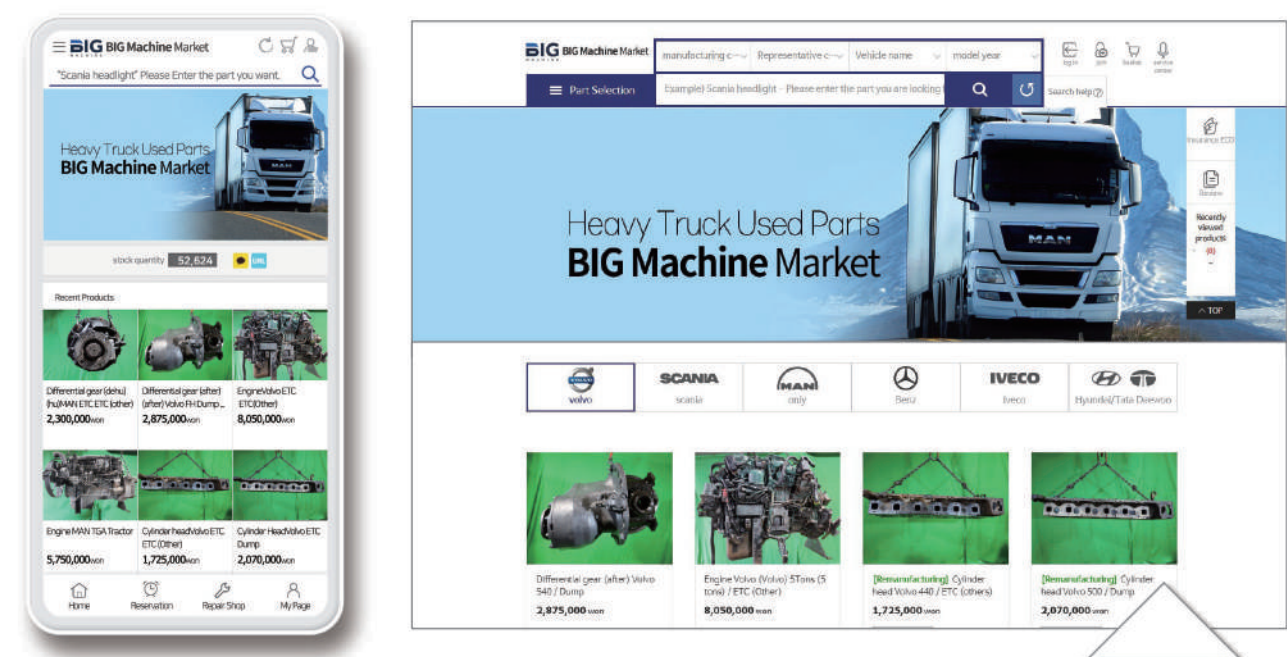
Fuel Filter



Gas Bottle Filter Cartridge

The Developer of ‘BIG Machine Market’ Platform for Used & Remanufactured Parts of Heavy Trucks

- Selected company for Startup Package by ‘Ministry of SMEs and Startups’ and ‘Seoul National University of Science and Technology’ in 2022
- Connecting used & remanufactured parts sellers and customers for heavy trucks
- Creating a warehouse and inventory management system that allows for convenient used & remanufactured parts product management for heavy trucks



Pile driving



ISU 이수정비

대형수입트럭 캘리퍼 재제조전문업체 '이수정비'

대형수입트럭 캘리퍼 재제조분야 오랜기술 노하우로 품질보증은 물론 생산물배상책임보험 3억원가입, 화재배상 책임보험 5억원 가입으로 신뢰성까지 확보하였습니다. 실속있는 가격으로 고가의 캘리퍼 수입부품을 대체할 수 있는 이수정비의 고품질 캘리퍼를 지금 만나보십시오.



▲ 이수정비 김성수 대표

이수정비 캘리퍼 재제조 제품



▲ 볼보FM 트랙터 3축

▲ 만 트랙

▲ 벤츠트럭

▲ 볼보FH 420

▲ 볼보FH 트랙터3축

▲ 볼보FM 440

▲ 볼보FM 440

▲ 이베코

※ 수록된 제품사진 외 캘리퍼전 차종제품을 재제조합니다.
※ 본 광고 제품은 1급자동차, 건설기계 정비사업체에만 공급합니다.



▲ 캘리퍼 부품



▲ 캘리퍼 부품



▲ 생산물 배상책임보험가입



(주)대호하이드로릭 DAIHO HYDRAULICS.CO.,LTD

<재제조 주요 품목>



Mixer Pump



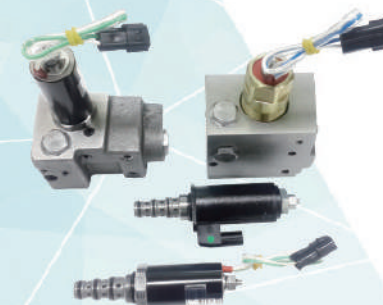
Mixer Motor



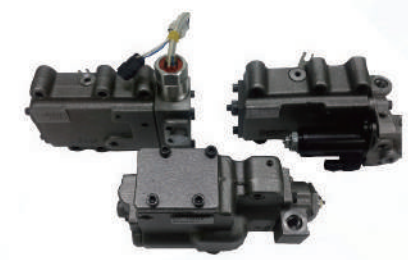
LSV [load sensing Valve]



HSU [Hydraulic Static Unit]



EPPR Valve



Regulator



호수건설기계정비

재제조 주요 품목(부품)



유압메인펌프
(Hydraulic Main Pump)
도저 23톤 용



트랜스미션, 감속기
(Transmission)
도저 23톤 용



트랜스미션, 감속기
(Transmission)
도저 7톤 용

재제조 주요 품목(장비)





충남기계

Chungnam Machinery

<재제조 주요 품목>



허브
(Hub)
VOLVO 1,2축 허브



락클
(Shaft Journal)
VOLVO 1,2축 샤프트 저널



허브
(Hub)
VOLVO 3,4축 허브



조인트
(Propeller Shaft)
VOLVO propeller shaft



프런트 액슬
(Front Axle)
VOLVO 1,2축 프론트 액슬 빔



리어 액슬 하우징
(Rear Axle Housing)
VOLVO 4축 리어 액슬 하우징



리어 액슬 하우징
(Rear Axle Housing)
VOLVO 3축 리어 액슬 하우징





Korea Remanufacturing Association
of Construction & Industrial Machinery

본회

38408 경북 경산시 하양읍 지식산업4로 112
Tel. (053) 851-9212, 14 Fax. (053) 851-9214

Head office

38408, 112, Jisiksaneop 4-ro, Hayang-eup, Gyeongsan-si,
Gyeongsangbuk-do, Republic of Korea
Tel. +82-53-851-9212, 14 Fax. +82-53-851-9214

INDUSTRIAL MACHINERY Re-Man

 DAESHIN ENGINEERING Co.

 YOUNGJIN TECH

 TSG

 WAFS

 CHANGWON
NATIONAL UNIVERSITY

 GYEONGNAM TECHNOPARK



Korea Remanufacturing Association
of Construction & Industrial Machinery

Remanufacturing



Plano Miller



Angular Grinding Machine



Cylindrical Grinding Machine



Crank shaft Grinding Machine



Horizontal Machining center

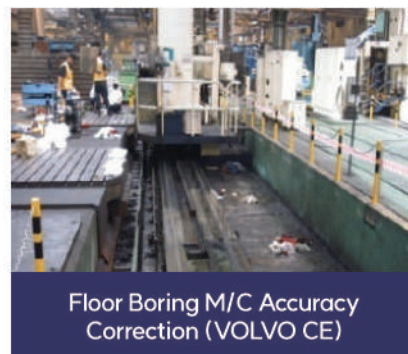


Vertical Milling Machine

Engineering



Giddings & Lewis H-MCT G-60
Overhaul (VOLVO CE)



Floor Boring M/C Accuracy
Correction (VOLVO CE)



Double-sided Milling M/C
Overhaul (POSCO)



Hitachi Seiki H-MCT HC-400
Overhaul (TaeguTec)



Hitachi Seiki H-MCT HC-500
Overhaul (TaeguTec)



KOYO Centerless Grinding M/C
Overhaul (VOLVO CE)

Design and production



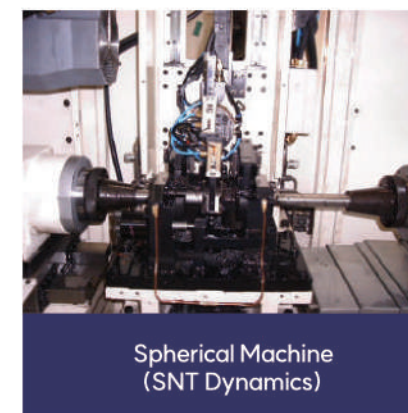
Vertical Machining center
(Pukyong National University)



Cold Sawing Machine
POSCO



Super Finishing machine
(DAEIL)



Spherical Machine
(SNT Dynamics)



Wormmiller
(SNT Dynamics)



Axle housing Welding machine
(SNT Dynamics)



Axle housing CNC 3-WAY M/C
(SNT Dynamics)

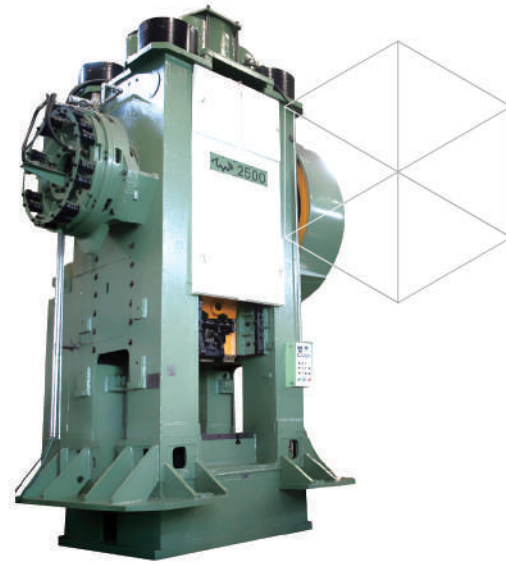


CNC Vertical lathe
(TaeguTec)



Axle shaft Machining Line
(YOUNGJIN TECH)

FORGING MACHINE



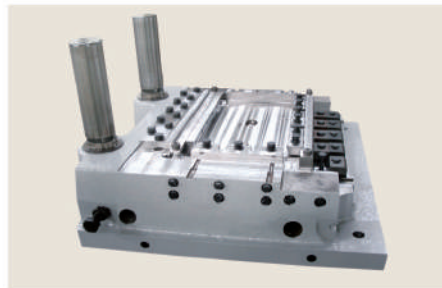
Remanufacture of forging Machine

We design and mechanically process the worn out part of the main body for ourselves, newly manufacture and substitute the parts, and are reproducing at a level of new equipment.

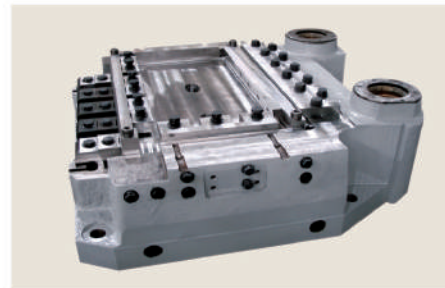
Manufacture of Spare Parts for Forging machine

HOT FORMER, FORGING PRESS, HAMMER, UPSETTER SPARE PARTS

3150Ton PRESS DIE HOLDER

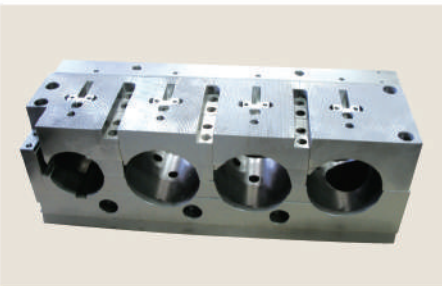


Low Die Holder

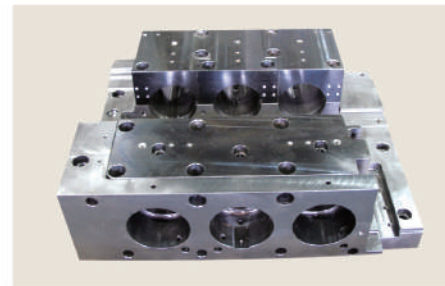


Upper Die Holder

HATEBER HOT FORMER



AMP50 Die Block



AMP30 Tool Block



Overhaul Factory



Trimming Press Overhaul



EUMUCO 200T on Upsetter Overhaul



SUMITOMO 4500T on F.Press Overhaul



8Ton Air Drop Hammer Overhaul



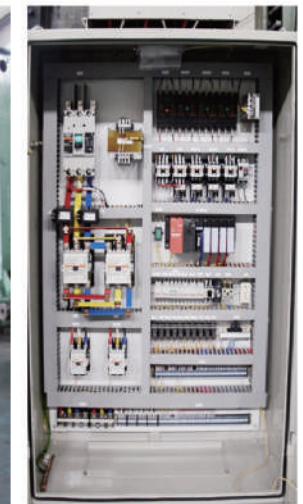
VORONEZH 2500T on Press Overhaul



2500Ton Forging



Slide Ram Assembly



Electric Control Panel



315Ton Trimming Press Overhaul



Brake Assembly



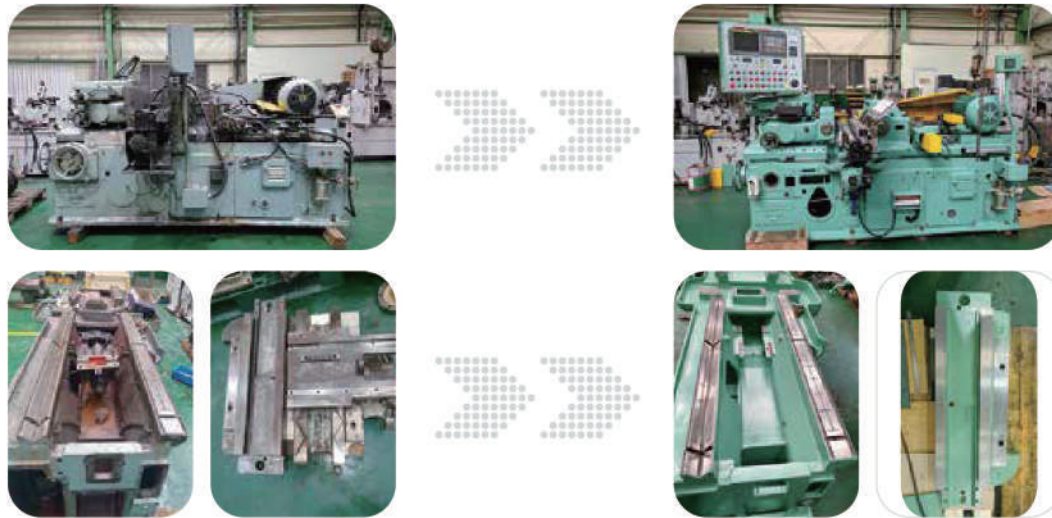
Clutch Assembly

Remanufacturing

Best effect with minimum investment

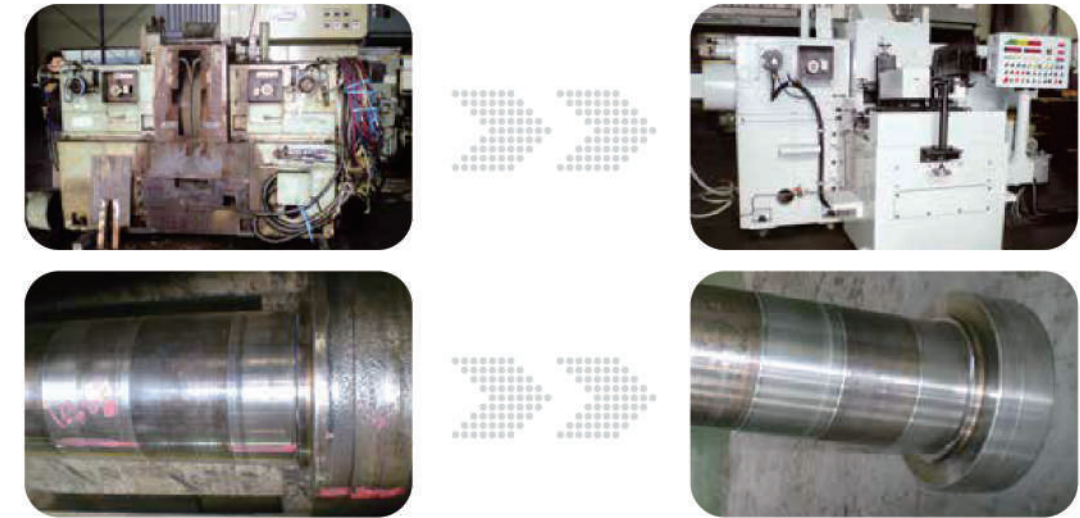
1) Centerless grinder Model : LMV-4V (Lidkoping)

- Hydraulic type → NC type improvement
- Precision restoration
 - Slide grinding, Scraping, Spindle bearing replacement etc....



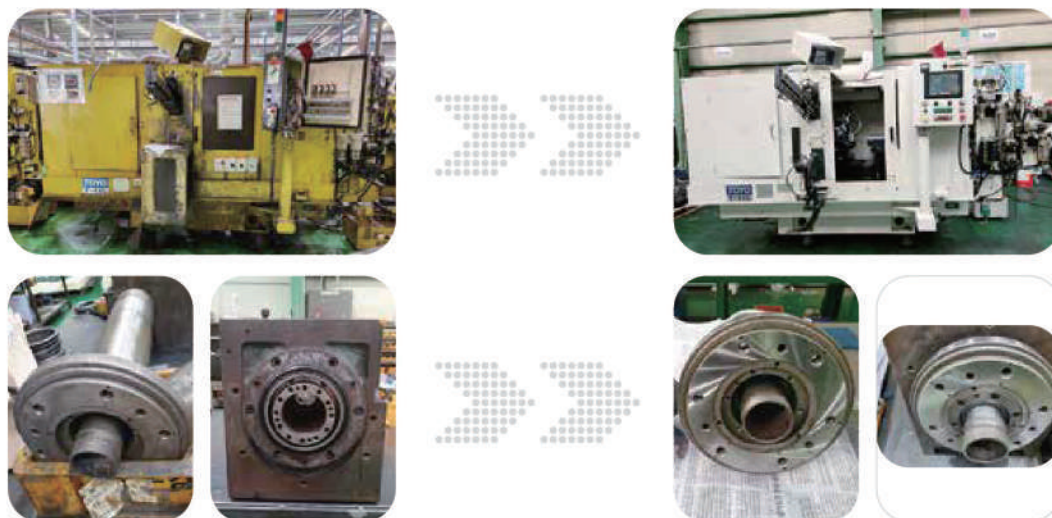
3) Double disk grinder Model : 2D-760 (KOYO)

- Precision restoration
 - Slide grinding, Spindle bearing replacement etc....
- Modification of product supply system



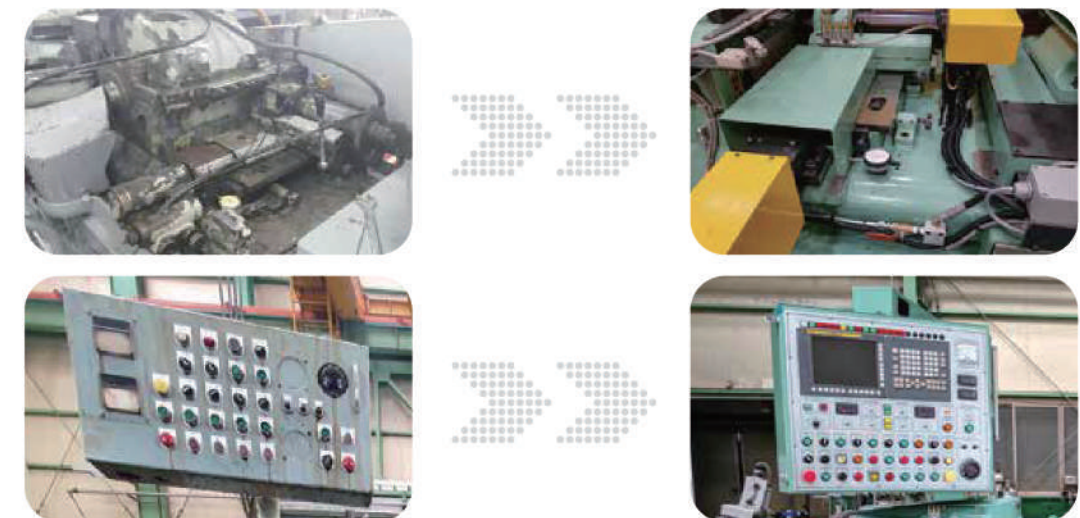
2) Internal grinder Model : T-11L (TOYO)

- Precision restoration)
 - Slide grinding, Spindle bearing replacement etc....



4) Unit improvement

- Hyd' cylinder infeed → Ball screw + Servo motor
- Hydraulic type → NC type improvement

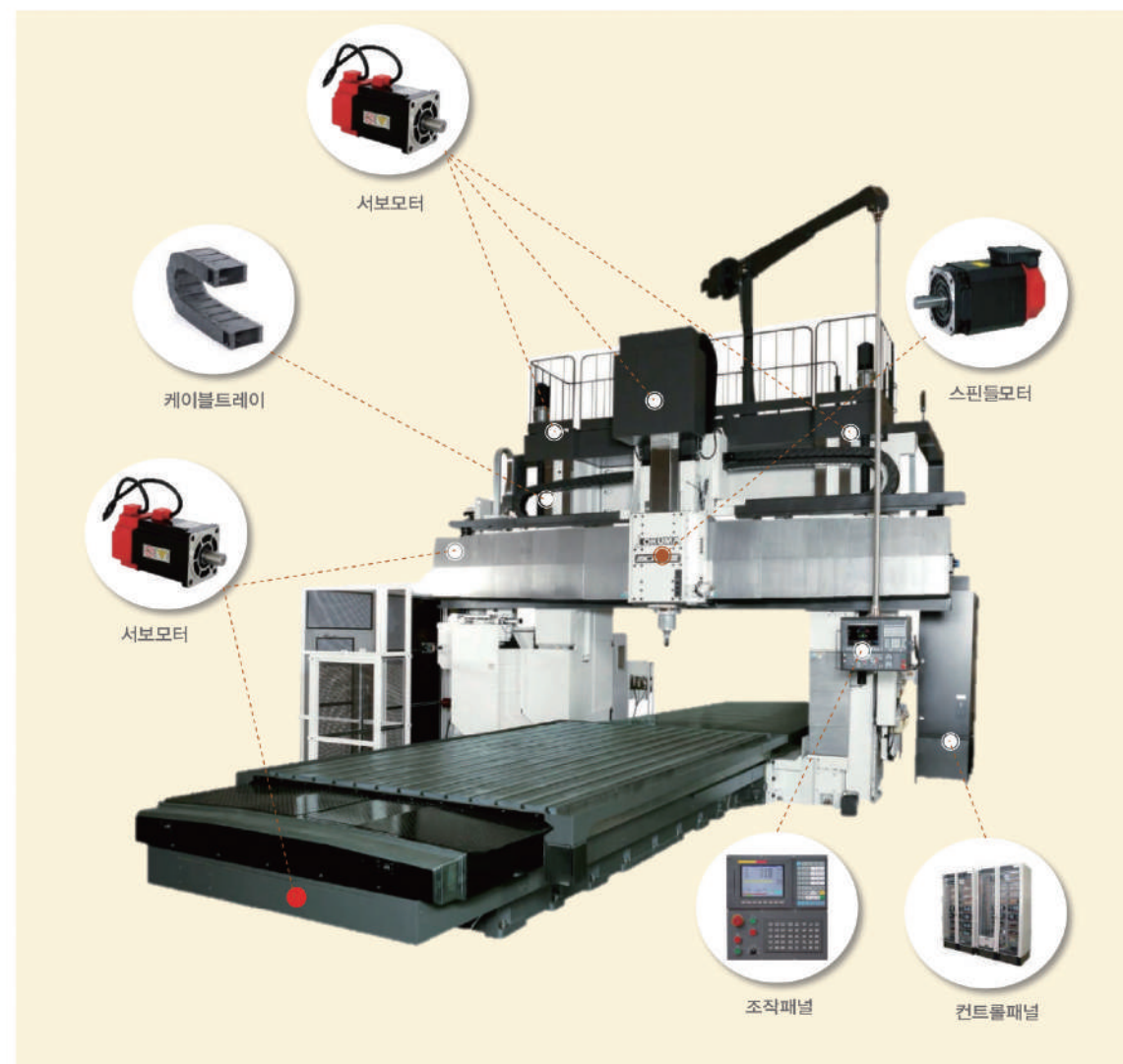


CNC REMAN

WAFF는 FANUC시스템 Reman 전문 기업으로, 노후화 된 설비들의 개조공사를 진행하고 있습니다. 기본설비 본체를 바탕으로 Reman 하여 저비용으로 고가의 노후장비를 새 장비처럼 사용 가능케 합니다.

As professional company for retrofit of FANUC, WAFF is reman old machine. We reman machine based on main body, it is expected using old machine to new machine by low cost.

적용가능시스템 | The Applicable System



작업범위 | Scope of Work



Before



After

FANUC 컨트롤러 Operation Panel Reman

- 구형 화낙 15-M 에서 최신 31i 컨트롤러 교체
- LAN통신 기능 활성화, 데이터 처리속도 증가, 메모리 용량 증가, 유지보수 및 부품 수급 용이



Before



After

배전반 Control Box Reman

- 구형 엠프로에서 신형 엠프로 교체
- 입출력 제어 용이, 내부부품 오작동 감소, 유지보수 및 관리용이



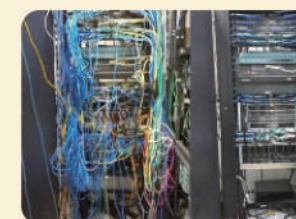
Before



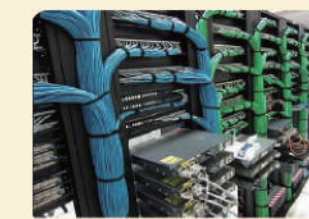
After

스핀들/서보 모터 Spindle/Servo Motor Reman

- 구형 DC모터에서 신형 AC 모터로 교체
- 시스템과의 연계성 증가, 위치 제어 가능, 정밀가공성 증가, 유지보수 및 관리 용이



Before



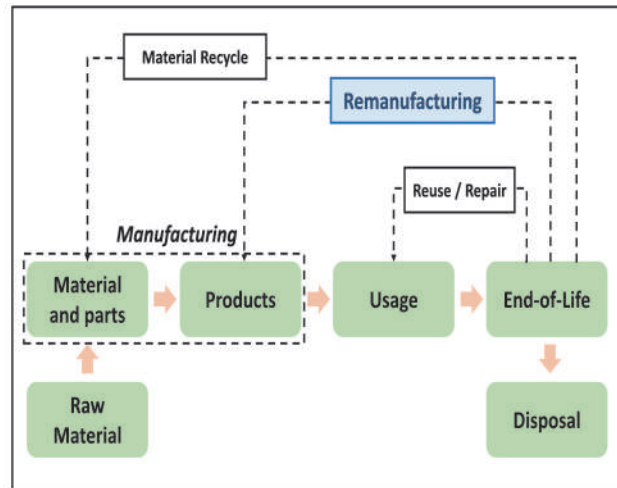
After

케이블 Cable Reman

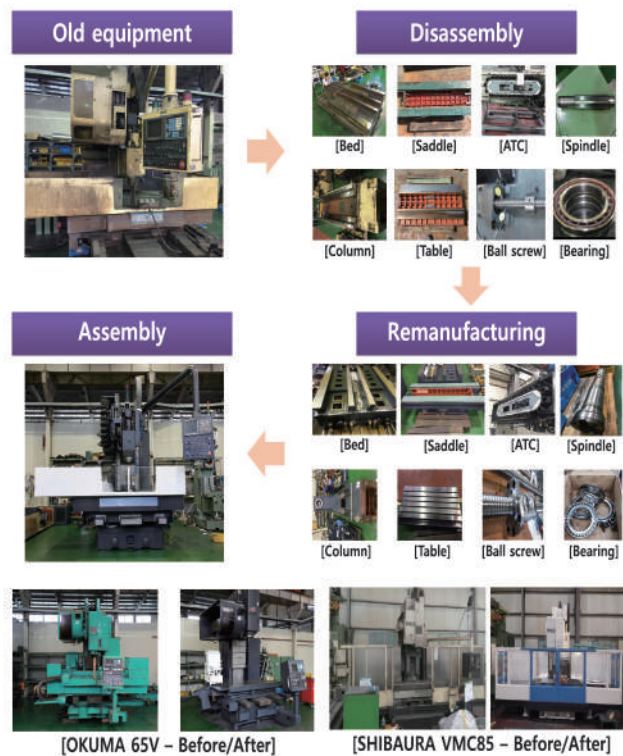
- 센서 및 설비 구동계 오작동 방지, 장비 수명연장

Remanufacturing

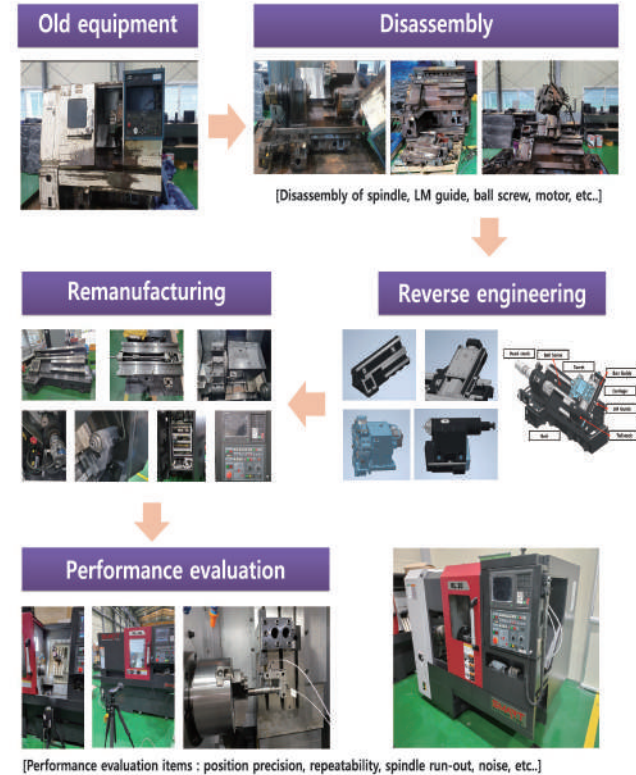
- Remanufacturing refers to a process where an aged tool or product to be scrapped is dismantled and disassembled, and its parts are cleaned, inspected, and evaluated for performance so that its degraded parts are identified, replaced, and reprocessed.
- One of these eco-friendly production methods, remanufacturing, is defined as a series of processes to re-commercialize end-of-life products and parts as new products.



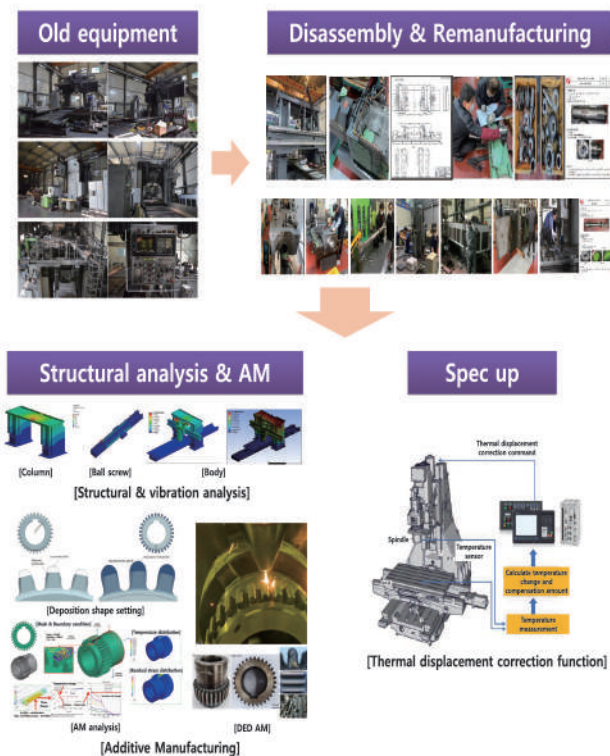
Vertical machining center



Lathe machine tool



Planer Miller (developing)



Center Overview



- Address** 86, Gongdan-ro 474, Sangbok-dong, Seongsan-gu, Changwon-si, Gyeongsangnam-do
- Configuration** Two buildings
- Remanufacturing factory
- A research building
- Role**
- Support for industrial machinery remanufacturing performance evaluation
- Fostering companies specializing in remanufacturing
- Planning of industrial machinery re-manufacturing government support projects, etc

Contents of application



Equipment





Korea Remanufacturing Association
of Construction & Industrial Machinery

본회

38408 경북 경산시 하양읍 지식산업4로 112
Tel. (053) 851-9212, 14 Fax. (053) 851-9214

Head office

38408, 112, Jisiksaneop 4-ro, Hayang-eup, Gyeongsan-si,
Gyeongsangbuk-do, Republic of Korea
Tel. +82-53-851-9212, 14 Fax. +82-53-851-9214